

# ***Nikon***

Companion Software for  
COOLPIX Digital Cameras

## **Nikon View Ver.2**

for Macintosh  
Version 2.5

**Reference Manual**

## **Contents**

### **Overview**

#### **Setting Up the Camera Drive**

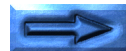
- Mounting the Camera
- Camera Drive Settings
- Unmounting the Camera
- Notes on Using the Camera as a Drive

#### **Working with Images**

- Viewing the Items in the Camera's Memory
- Copying Images to Disk
- Deleting Images from the Camera
- Opening Images in Another Application

#### **Nikon View Browser**

- Browsing Images in Your Camera
- Browsing Compact Flash-Memory Cards
- Browsing Images on Disk
- Selecting Images
- Viewing Images with the Built-in Viewer
- Deleting Images
- Printing Images
- Changing the Appearance of Thumbnails
- Viewing Image Information
- Copying Images to Disk
- Opening Images in Another Application



## Nikon View Reference

Nikon View Control Strip Item

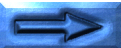
The Browser Window

Welcome to *Nikon View Ver.2 for Macintosh* (below, *Nikon View*), a companion program for the COOLPIX 700, COOLPIX 800, COOLPIX 900 Series, and the COOLPIX 950 (below, "COOLPIX digital cameras"). *Nikon View* allows you to connect your camera to a Macintosh for quick retrieval and browsing of the images stored in your camera. Once *Nikon View* is installed on your Macintosh, the camera can be used like any other drive, allowing free access to images in the camera via standard Mac OS file operations. *Nikon View Browser* is also provided, making it possible to display the contents of the camera's memory as thumbnail images. Once you have installed *Nikon View* and mastered its simple operation, you'll be able to distribute your digital photographs by disk or electronic mail, or include them in your home page and other documents you create for business or personal use.

*Nikon View's* features include those listed below.

- a driver function that supports connection to your camera and allows you to operate your camera's memory like any other drive
- thumbnails viewed in *Nikon View Browser* can be copied to disk or opened in other applications using drag and drop
- images in the camera's memory can be handled using standard Mac OS file operations

- images can be opened in any application that supports JPEG or TIFF for retouching or to be saved in another format, allowing you to use images as desktop pictures or distribute them by electronic mail
- if you have a compact flash-memory reader or a PCMCIA card slot and card adapter, the digital camera's compact flash-memory cards can be browsed even when not inserted in the camera



This manual will guide you, step-by-step, through the process of using *Nikon View* with your digital camera. For details on *Nikon View* installation and system requirements, refer to the "*Quick Start Guide*."

## **The Manual Layout**

The contents of each chapter are outlined below.

### **Overview**

Describes *Nikon View's* features and outlines the contents of this manual

### **Setting Up the Camera Drive**

Explains how to mount and unmount the camera

### **Working with Images**

Explains how to access images stored in the camera's memory, open them in other applications for editing, and copy them to disk

### ***Nikon View Browser***

Describes how to display images as thumbnails, view images, and copy them to disk using *Nikon View Browser*


### **Nikon View Reference**

A handy reference guide to *Nikon View's* windows and menus

## **With Different Operating Systems**

The illustrations and explanations in this manual are for Mac OS 8.6. Display and operation may differ slightly in other versions of Mac OS. Refer to the system software manual for the version you are using.

## **On Symbols in This Manual**

The  symbols in this manual signify the need for caution when using the product. These indications are placed in sections that should be read before operation to prevent damage to the product.

## **Working Knowledge**

This manual assumes a basic understanding of common Mac OS operations. If you are in doubt about the meaning of terms used here, refer to your Mac OS manual.

## Setting Up the Camera Drive

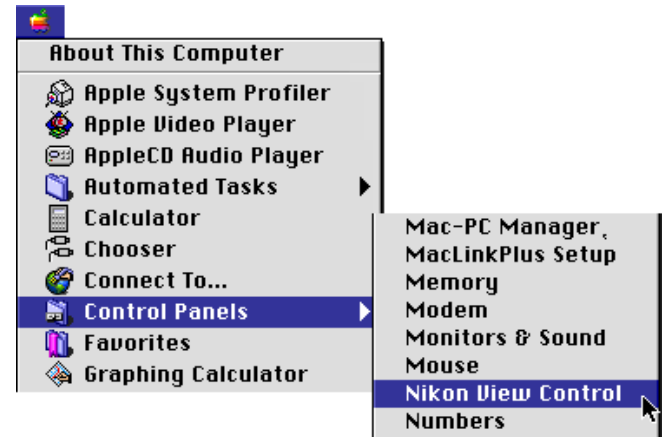
Once you have installed the *Nikon View* software as described in "*Quick Start Guide*," you can mount the camera. The mounted camera drive icon is displayed on the desktop, just as with any other drive. This chapter describes how to mount the camera, choose settings, and unmount the camera.

### Mounting the Camera

Follow these steps to mount your camera as a drive.

- 1 Connect the camera to your Macintosh as described in the documentation provided with your COOLPIX digital camera.

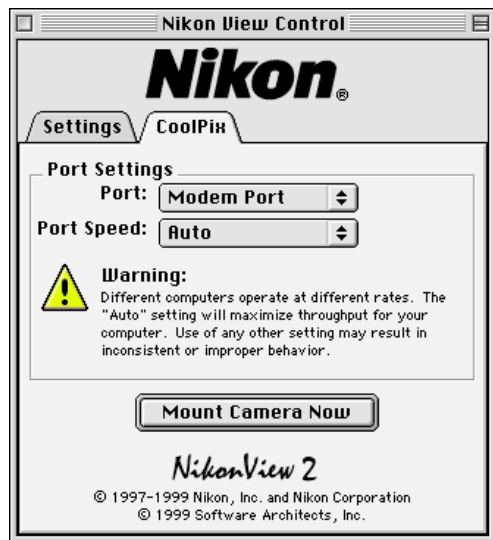
- 2 After turning on your Macintosh, choose **Nikon View Control** from the **Control Panels** submenu of the Apple menu (🍏).



- Short-cut:** Select **Open Nikon View Control...** from the Nikon View item menu on the control strip. The Nikon View Control window will be displayed.



- 3 From the **Port** option pop-up menu, choose the appropriate connection port (“Modem Port” or “Printer Port”).



**Note:** *PowerBook users who have connected the camera to the printer/external modem port should turn AppleTalk off and then select **Modem Port** in the **Port** option.*

### Setting Serial Port Speed

The data transfer rate used when the camera is connected to the computer via the modem/printer port can be chosen from the **Port Speed** option pop-up menu. Choose **Auto** to have *Nikon View* automatically select a speed suited to your Macintosh.

### Setting camera drive options

The following options are available:

- if the **Create Thumbnails** box is checked, thumbnail previews of the images in the camera will be created when the camera is first connected as a drive.
- the application used to open camera files (the default is the built-in viewer in *Nikon View Browser*)
- alternate drives, in place of the camera (mounting compact flash-memory cards inserted in card readers, a computer card drive)

For details, see “*Camera Drive Settings*,” in the next section.

#### Tip

Depending on your set-up, auto data-rate detection may not perform as expected. Should you experience problems reading the data stored in the camera, select a new speed in the CoolPix panel. If you still experience difficulties at the highest available rate, choose successively lower speeds until you find one that works.



4 Once any changes to settings have been made, click **Mount Camera Now** to connect the camera.

The following message will be displayed while the computer connects to the camera.

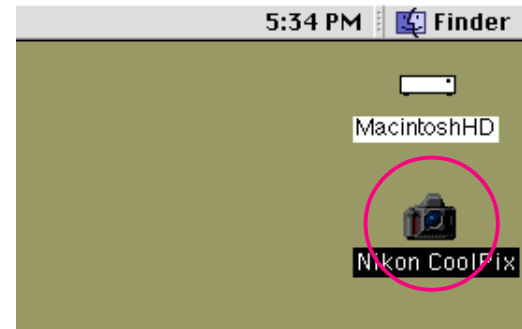


**Caution:** The data-transfer icon in the camera's control panel is displayed while the computer communicates with the camera. The data-transfer icon is displayed for up to sixty seconds after transfer of data is complete. Do not disconnect the camera while the icon is displayed. (The data transfer icon varies according to your camera model.)



The data-transfer icon  
(COOLPIX 950)

Once the camera has been selected as a drive, a **Nikon CoolPix** icon will appear at the right side of the desktop with the computer's other drives.



### Resolving connection error

If *Nikon View* is unable to locate the camera, an alert dialog will appear. After clicking **OK** in the dialog, check that the camera and computer are connected and that the camera's selector dial is not set to **OFF**. If the data transfer icon is not showing in the camera's control panel, check whether the serial cable is properly connected and that the batteries are properly inserted and are not dead. If you are using the AC adapter, be sure that it is properly connected. Refer to the ReadMe file for the latest information on connection errors. The ReadMe file contains updates that are not included in the manual.



## Mounting the camera without changing port and settings

Once you have connected to the camera using the Nikon View Control window to specify a port and other settings, the next time you want to connect to your camera using the same settings you can connect directly without using the Nikon View Control window. To connect directly to the camera, choose **Nikon CoolPix Mounter** from the Apple menu (🍏).

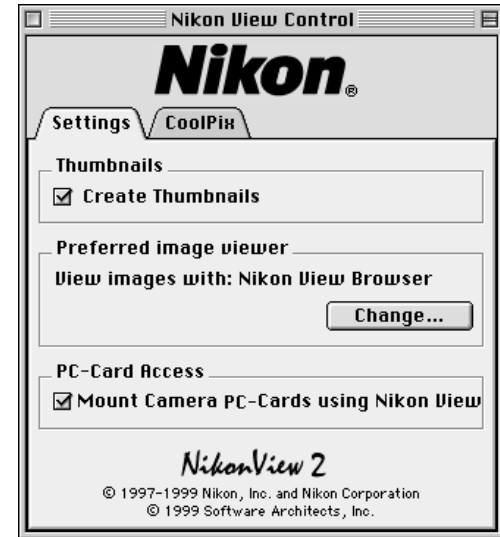


**Short-cut:** From the Nikon View item menu on the Control Strip, choose **Mount Camera Now**.

## Camera Drive Settings

You can choose camera drive settings when you mount the camera.

When you click on the Nikon View Control window **Settings** tab, the following window will be displayed.



The following settings can be adjusted from the Settings panel. Click the **CoolPix** tab to return to the CoolPix panel.

**Note:** With the E900 connected through the modem port, and modem speed set to **AUTO**, you can not delete files or format the PC card.





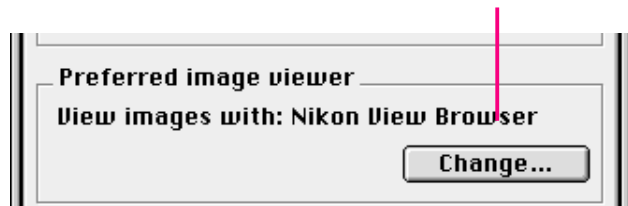
## Creating thumbnail icons

If the **Create Thumbnails** box is checked, thumbnail previews of the images in the camera will be created when the camera is first connected as a drive. When you open the Image Folder in the mounted Nikon CoolPix camera drive, image files are displayed as thumbnail icons. These thumbnails will be displayed in **Nikon View Browser** (see below), and in the Open dialog box when viewing images on the Nikon CoolPix camera drive.

## Choosing the application used to open camera files

You can choose the application used to open image files in the camera memory. The application used by default is *Nikon View Browser* (built-in viewer).

the application used to open image files



To use a different application, click the **Change...** button. In the dialog that appears, navigate to a folder containing an application that supports the file formats used by the camera. Select the application and click **Open**.

## Mounting the compact flash-memory cards

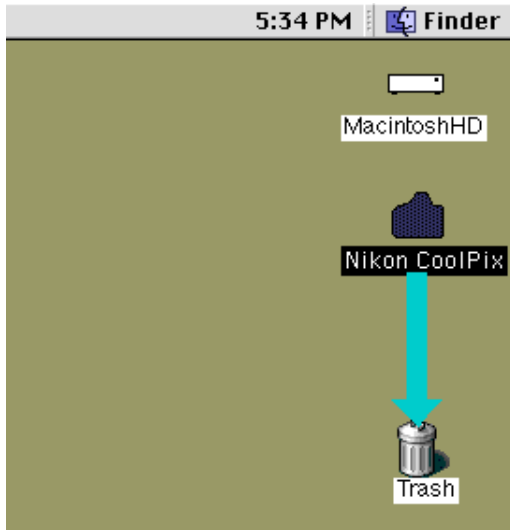
When the **Mount Camera PC-Cards using Nikon View** check box is selected, compact flash-memory cards (only Nikon digital camera cards may be used) in a computer card drive, or card-readers are mounted as the Nikon CoolPix camera drive. After it is mounted, you can carry out image file operations just as when you mounted the camera.

## Unmounting the Camera

When you turn off your Macintosh, the camera will be unmounted automatically. To unmount the camera without turning off the computer, use one of the methods given below.

### Drag the Nikon CoolPix icon into the Trash

The camera can be unmounted by dragging the **Nikon CoolPix** icon into the Trash.

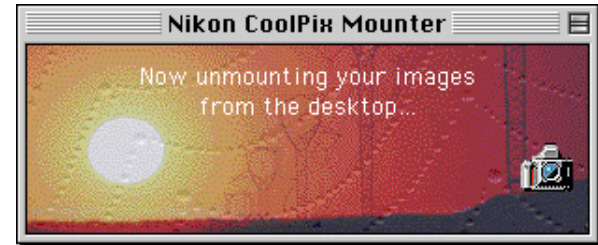


Camera drive folders will close and the **Nikon CoolPix** icon will disappear from the desktop.

### Select Nikon CoolPix Mounter from the Apple menu

Select **Nikon CoolPix Mounter** from the Apple menu ().

The following message will be displayed.



Camera drive folders will close and the **Nikon CoolPix** icon will disappear from the desktop.

Alternatively, you can choose **Nikon View Control** from the **Control Panels** submenu of the Apple menu () and click **Unmount Now** in the Nikon View Control window.

**Short-cut:** Select **Unmount Camera Now** from the Nikon View item menu on the Control Strip. Or, click the **Nikon CoolPix** icon, then select **Put Away** (⌘Y) from the **File** menu.

## Notes on Using the Camera as a Drive

*Nikon View* allows the camera's memory to be used in much the same way that you would use any other drive. Note, however, that certain limitations apply as listed below.

### **Only one camera is supported at a time:**

If two cameras are connected, one to the modem port and the other to the printer port, you can switch between cameras using the Nikon View Control window.

### **The camera cannot be shared over a network:**

The camera will not function as a network drive. Consequently the **Nikon CoolPix** icon will not be visible to other computers.

### **The camera's memory is read-only:**

The camera's memory is read only, so that files can not be copied to the camera's memory, nor can files be saved after being changed or edited in another application. Should you wish to change a file name, do so after copying the image to the hard disk. Once a file has been changed in any way, it can not be copied back to the image folder in the camera drive. (**New Folder** and **Duplicate** in the **File** menu are enabled for the camera volume. However, you can not create new folders or duplicate files on the camera's memory.)

# Working with Images

Once the camera is connected as a drive, as described in the previous sections, you can use the camera's memory with *Nikon View* in much the same way that you would use any other drive under Mac OS. This chapter describes how to copy images taken with the COOLPIX digital camera to disk, and how to open them for editing in other applications. These operations are much the same as standard Finder operations; consult your Mac OS manual for details.

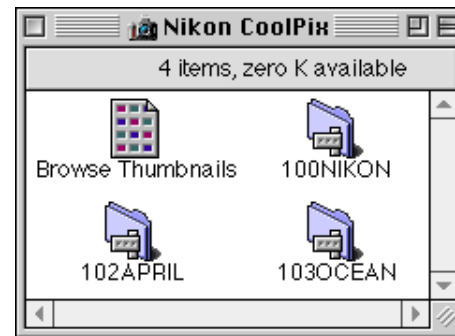
## Viewing the Items in the Camera's Memory

Follow these steps to view images stored in your digital camera's memory.

- 1 Double-click the **Nikon CoolPix** icon at the right side of the desktop.



The Nikon CoolPix camera drive window opens, and folders saved in the camera memory are displayed.



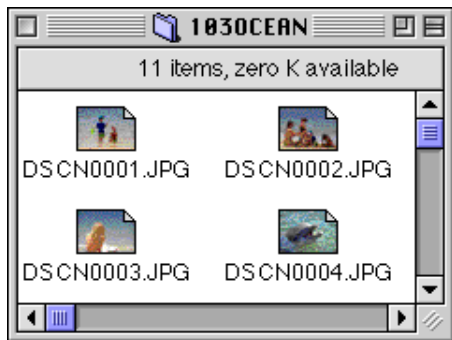
- 2 Double-click the folder icon that you want to browse.

### Folder Names

When displayed in *Nikon View*, folders created with the camera are prefixed by a three-digit folder number. Thus the default folder, which, when viewed from the camera menus, has the name "NIKON," is displayed in *Nikon View* as "100NIKON." Each folder can hold up to 999 images. If this number is exceeded, the camera will create a new folder with the same name but a different prefix (e.g., "101NIKON"). When viewed on a computer, folders with the same name but a different prefix appear as separate folders. When viewed from the camera menus, however, folders with the same name appear to be the same folder, although the full folder name with prefix appears in the photo information display in playback mode.



The images in the selected folder will appear as thumbnails icons.



Images can be copied to disk or opened for editing in another application using standard Finder operations, as described below.

#### Tip

When the camera functions as a drive, it is treated as a read-only disk. Files cannot be copied or saved to the camera. Similarly, the Finder commands **New Folder**, **Duplicate**, and **Make Alias** cannot be used on the camera or the images it contains. Even if you select **as List** or **as Buttons** from the Finder menu to view folders, images will be displayed as icons the next time you mount the camera.

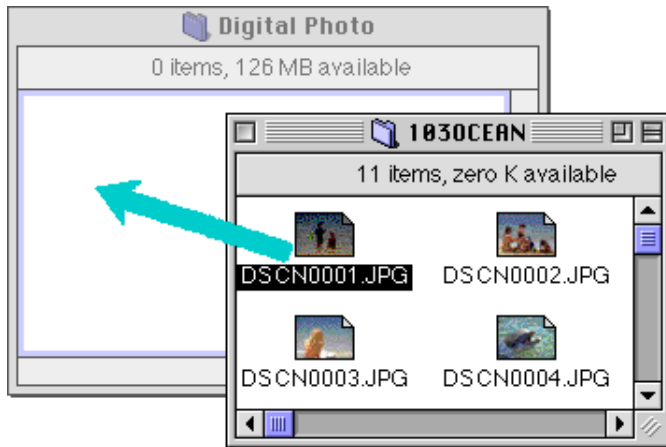
**Caution:** Do not try to replace an image file on the camera's memory card with another image file with the same name. Even if you click **OK**, the file can not be overwritten, but will be erased from the memory.

#### Tip

The ReadMe file in the Nikon CoolPix window contains important information for using *Nikon View*. This ReadMe file can be deleted by dragging the file into the Trash. Once deleted, the file is permanently erased from the Nikon CoolPix window. If, after deleting the ReadMe file, you would like to review the information provided there, drag the **Nikon View Preferences** file (found in the path "System Folder : Preferences : Nikon View Preferences") to the Trash and restart your computer.

## Copying Images to Disk

Before copying images to disk, locate or create the destination folder. To copy images to disk, select the images you wish to copy by clicking their icons (you can select multiple images by holding down the **shift** key while clicking each image in turn), then drag any of the selected icons over the destination folder and release the mouse button.



**Note:** *Because the camera functions as a read-only drive, images can only be copied, not moved, even if the option key is not held down.*

### Tip

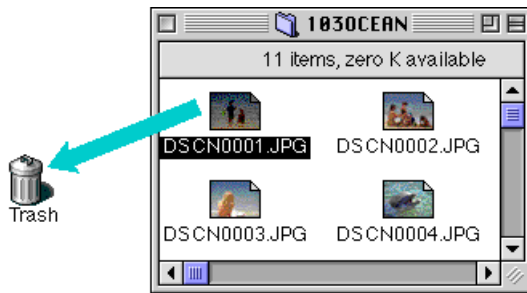
All images taken with the camera are assigned file names beginning with "DSCN0001.JPG (or .TIF)." Likewise, all image files saved in folders in the camera's memory are assigned file names beginning with "DSCN0001.JPG (or .TIF)." Thus, to prevent overwriting when copying an image to disk, change the filename when you copy an image, or create a new copy folder for each camera folder.

## Deleting Images from the Camera

To delete an image from the camera memory, move the thumbnail icon for the image to be deleted from the browser window to the Trash.

**Note:** *Image files are permanently deleted in this way, so be sure to check the image being deleted before carrying out this step*

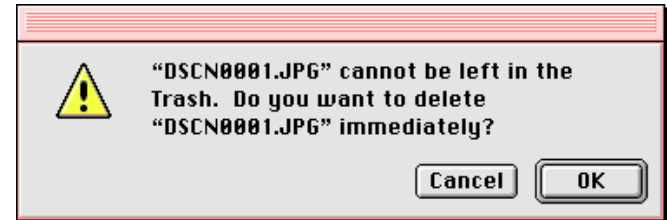
Images can be deleted by dragging their associated thumbnails over the Trash icon and releasing the mouse button.



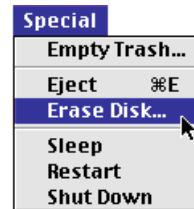
Images can also be deleted by selecting their thumbnails in the browser window and choosing **Move to Trash** from the **File** menu.



When images in the camera are dropped into the Trash, an alert dialog will appear. If you click **OK**, the image will be permanently deleted without being stored temporarily in the Trash.



To delete all images stored in the camera, you can initialize the disk. To do this, select the **Nikon CoolPix** icon on the desktop, and then choose **Erase Disk** from the **Special** menu. If you click the **Erase** button in the confirmation dialog box which appears, the camera's memory will be initialized and all data stored in the memory will be erased.



## Opening Images in Another Application

Images can be opened in the associated application either by double-clicking the image icon or by selecting **Open** from the Finder's **File** menu. Images can also be opened directly from any application that supports the file formats used by the camera.

### Opening selected images from the image folder

To open images, select the images you wish to open by clicking their icons (multiple images can be selected by holding down the **shift** key while clicking each image in turn), then double-click any of the selected thumbnails or choose **Open** from the **File** menu.



The application will start and the selected images will be opened in windows within the application.



### Tip

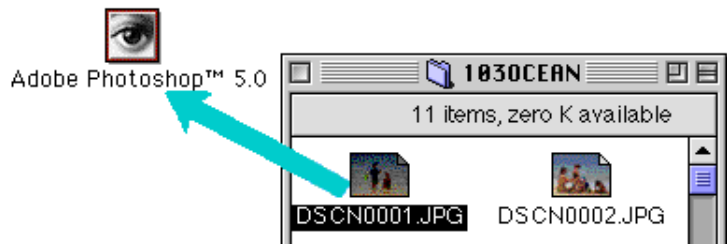
The application used to open camera image files is the one that you selected in the NikonView Control window, when you mounted the camera. If you selected the default **Nikon View Browser**, it will start, and you can view images at full resolution using the browser's built-in viewer. For details, see "*Nikon View Browser: Viewing Images with the Built-in Viewer.*" If you chose another application, that application will start, and open the images. If the specified application is not installed when you attempt to open an image, a dialog will appear prompting you to choose the application to be used. Choose a suitable application from the dialog box.





## Opening selected images by drag and drop

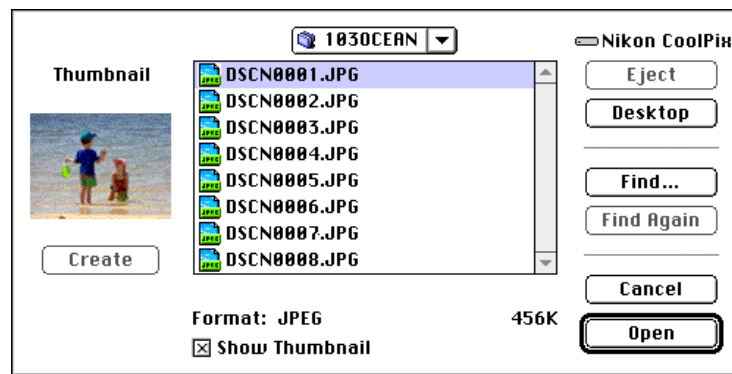
You can open selected images in any application that supports the file formats used by the camera by dragging their thumbnails over the application's icon or alias and releasing the mouse button.



The application will start and the selected images will be opened in windows within the application.

## Opening images from the application's Open dialog

Images in the camera can be opened from any application that supports the file formats used by the camera by choosing **Open...** or **Open File...** from the application's **File** menu. In the Open dialog, navigate to the Desktop, select the Nikon CoolPix drive, and click the **Open** button. The folders in the camera memory are displayed; choose the one you want and click the **Open** button. The images in the selected folder will be listed. If the application's Open dialog supports preview display, a preview of the image currently selected will appear in the dialog box.



Select the image you wish to open and click the **Open** button to open the image in the application.

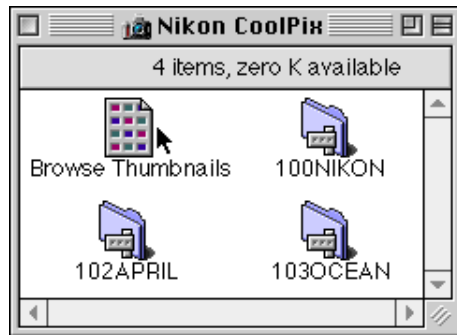
**Note:** *Previews are only displayed in the Open dialog box if the **Create Thumbnails** item in the Nikon View Control window was checked when the camera was mounted.*

# Nikon View Browser

*Nikon View Browser* is a utility that allows you to browse the images in the camera's memory as thumbnail previews. It also incorporates many Finder functions, making it easy to copy or open images while viewing them in preview. This chapter describes how to browse images using *Nikon View Browser*, how to display images in the browser's built-in viewer, how to copy images to disk, and how to open images for editing in other applications.

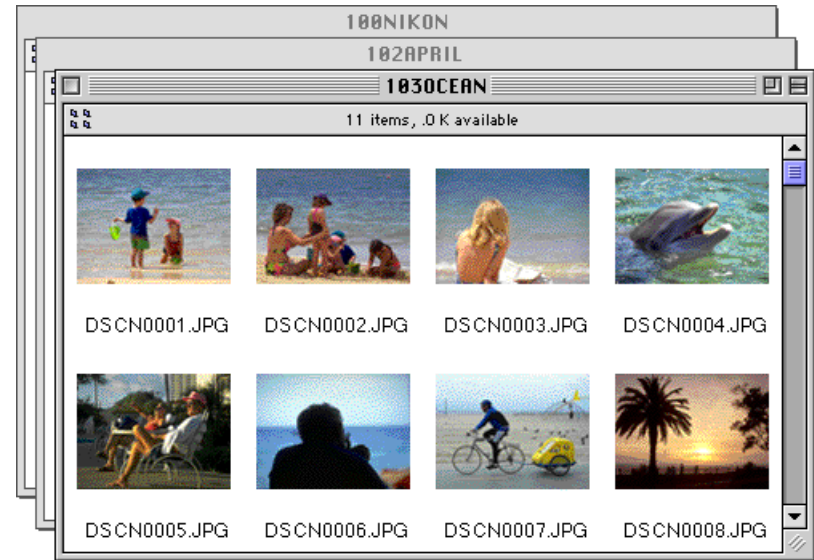
## Browsing Images in Your Camera

To start *Nikon View Browser* and view thumbnail previews of the images in the camera's memory, double-click the **Browse Thumbnails** icon in the Nikon CoolPix window.



**Note:** The **Browse Thumbnails** icon is only visible if the **Create Thumbnails** item in the *Nikon View Control* window was checked when the camera was mounted.

The browser windows for all folders in the camera memory will open and the images will appear as thumbnails.



From the browser window, you can select images to be opened in another application, printed, or copied to disk. You can also use the built-in viewer to view images at full resolution. These operations are detailed in the sections that follow.

### Tip

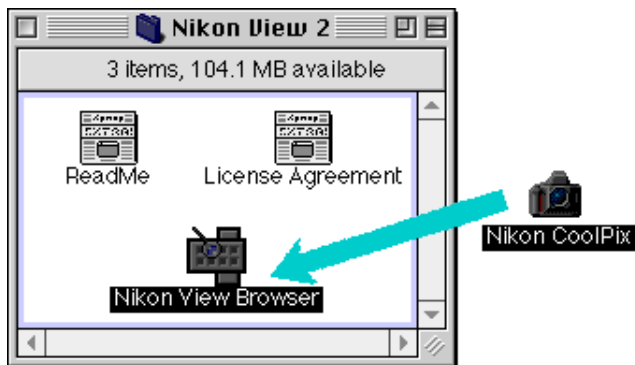
You can select images using the **tab** key or the arrow keys.



## Another way of starting *Nikon View Browser*

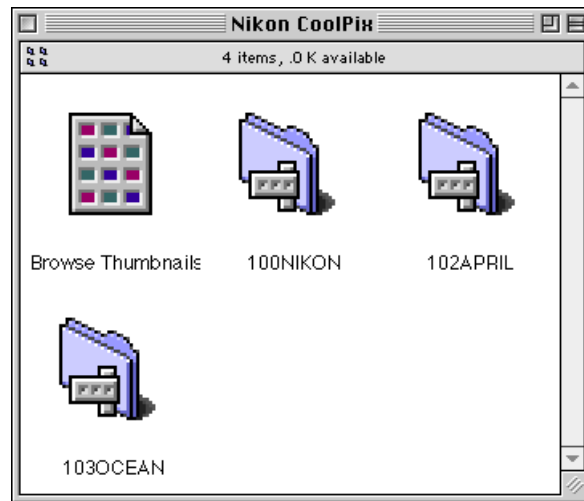
Follow these steps to start *Nikon View Browser* and view thumbnail previews of the images in the camera's memory.

- 1 Drag the **Nikon CoolPix** icon over the **Nikon View Browser** icon and release the mouse button.



**Note:** *Nikon View Browser* may be found in the path (Installation Disk) : (Installation Folder) : Nikon Software : Nikon View 2 : Nikon View Browser.

The Nikon CoolPix window opens, and folders saved in the camera memory are displayed.



- 2 Double-click the folder icons that you want to browse. *Nikon View Browser* will start, and the browser window will show thumbnail previews of the images in the selected folder.

*Nikon View Browser* can also be started by double-clicking the **Nikon View Browser** icon.



A dialog will appear prompting you to select a folder to browse. Select the desired folder and click **Select**.

## Browsing Compact Flash-Memory Cards

If your computer has a Type II PCMCIA card drive, you can read compact flash-memory cards using a flash-memory adapter (available separately from Nikon). Compact flash memory can also be read using a compact flash card-reader. If a card containing images recorded by a COOLPIX digital camera is inserted in either device, its contents can be browsed from the browser window.

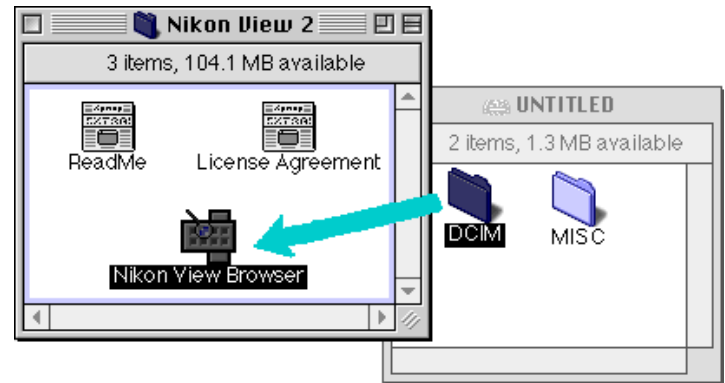
After inserting the card in a card slot or card reader, follow these steps to browse images in a compact flash-memory card.

- 1 Double-click the card icon on the desktop.



The drive window will open on the desktop.

- 2 Drag the **DCIM** folder icon over the **Nikon View Browser** icon and release the mouse button. (Folder names on the flash-memory card vary depending on which model COOLPIX digital camera you are using.)



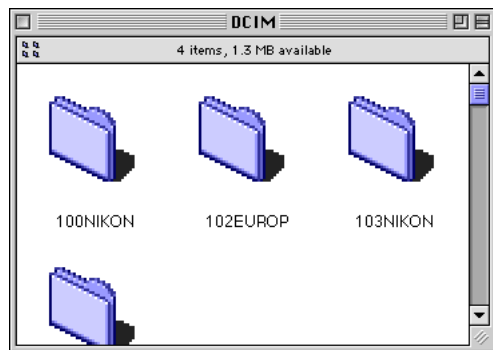
**Note:** **Nikon View Browser** may be found in the path (Installation Disk) : (Installation Folder) : Nikon Software : Nikon View 2 : Nikon View Browser.

### Tip

If a compact flash card reader or card drive is mounted as the CoolPix camera drive (by selecting the NikonView Control window when mounting the camera), you can use the same operations as when browsing the camera memory. See the preceding "Browsing Images in Your Camera" section.



The folders on the card are displayed.



- 3 Double-click the folder icon that you want to browse. The browser window will open, showing thumbnail previews of the images in the selected folder.



## Another way of starting Nikon View Browser

You can also start *Nikon View Browser* by double-clicking the **Nikon View Browser** icon.

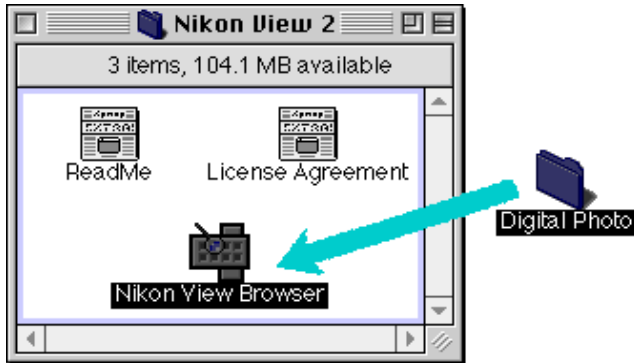


A dialog will appear prompting you to select a folder to browse. Select the desired folder and click **Select**.

**Note:** *If you copy the **Browse Thumbnails** icon from the Nikon CoolPix folder to a folder containing images, you can start Nikon View Browser by double-clicking the copy of the **Browse Thumbnails** icon.*

## Browsing Images on Disk

*Nikon View Browser* can also be used to browse JPEG or TIFF images on disk. Select the folder containing the images you wish to browse, drag it over the **Nikon View Browser** icon and release the mouse button.



**Note:** *Nikon View Browser* may be found in the path (Installation Disk) : (Installation Folder) : Nikon Software : Nikon View 2 : Nikon View Browser.

The browser window will open, showing thumbnail previews of the images in the selected folder.



**Note:** You can rename images while browsing the PC card or the hard disk.

### Tip

You can select images using the **tab** key or the arrow keys.



## Another way of starting *Nikon View Browser*

*Nikon View Browser* can also be started by double-clicking the **Nikon View Browser** icon.



A dialog will appear prompting you to select a folder to browse. Choose the desired folder, and then click **Select**.

**Note:** *If you copy the **Browse Thumbnails** icon from the **CoolPix** folder to a folder containing images, you can start Nikon View Browser to view the images in the folder by double-clicking the copy of the **Browse Thumbnails** icon.*

## Selecting Images

Images in the browser window can be printed or copied to disk. The images on which such operations are to be performed can be selected by clicking the image you wish to use. Selected images are highlighted.



Selected image

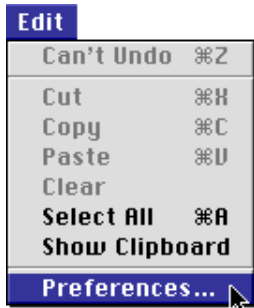
Multiple images can be selected by holding down the **Shift** key on the keyboard while clicking each image in turn. All images in the camera can be selected by choosing **Select All** from the **Edit** menu.

## Viewing Images with the Built-in Viewer

Images previewed in *Nikon View Browser* can be viewed at full resolution using the browser's built-in viewer. The viewer also offers zoom-in, zoom-out, and scroll functions.

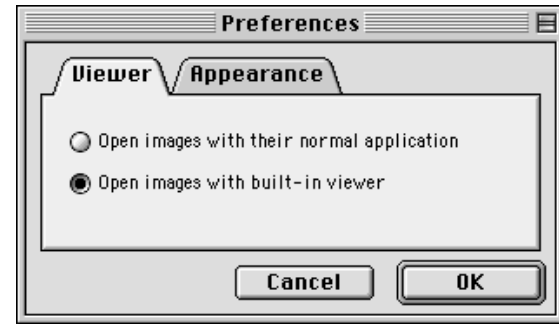
Follow these steps to view images with the browser's built-in viewer.

- 1 To select the built-in viewer as the application used when opening images from the browser, choose **Preferences...** from the browser **Edit** menu.



The Preferences dialog will appear.

Click the **Viewer** tab to open the Viewer panel. Select **Open images with built-in viewer** and click **OK**.



- 2 In the browser window, select the images you wish to view and double click any of the images or choose **Open** from the **File** menu to start the built-in viewer.





The selected images will be opened at full resolution in separate image windows.



### Zooming the image in and out

When moved over an image window with the **command** (⌘) key held down, the cursor takes the shape of a magnifying glass (🔍). Click anywhere on the image with the **command** (⌘) key held down to zoom the image in. Pressing the **option** key on the keyboard changes the cursor to a magnifying glass containing a minus sign (🔍-). Clicking anywhere in the image while holding down the **option** key will zoom the image out.

The image can also be zoomed in and out by clicking the zoom-in and zoom-out buttons at its lower left corner. Clicking the zoom-out button zooms the image out and reduces the size of the window to fit the image. Clicking the zoom-in button zooms the image in and enlarges the window to fit the image.



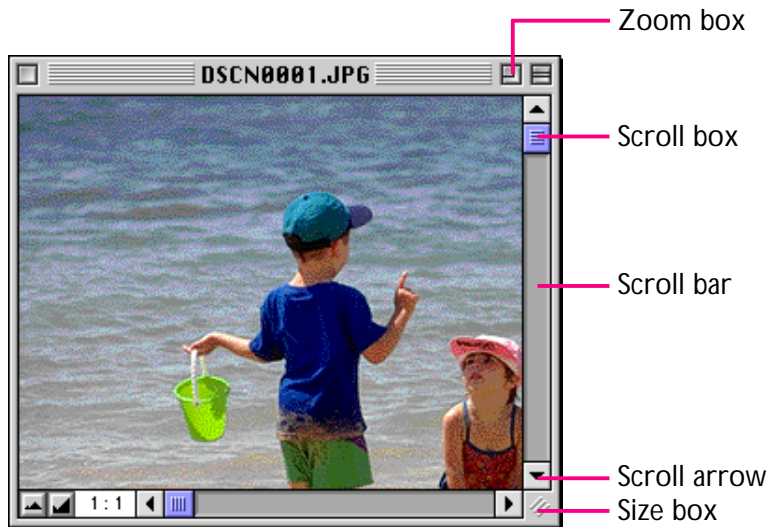
Zoom ratio (magnification)  
Zoom-in button  
Zoom-out button

**Note:** *Zoom operations have no effect on the thumbnails in the browser window.*



## Scrolling and resizing image windows

When the entire image does not fit in the image window, you can view the hidden portion by dragging the scroll boxes at the right and bottom of the window, or by clicking the scroll bars or scroll arrows. If you move the cursor over the image, the cursor will take the shape of a hand (☞), and the image can be scrolled by dragging it.



Alternatively, you can enlarge the window itself dragging the size box at its lower right corner.

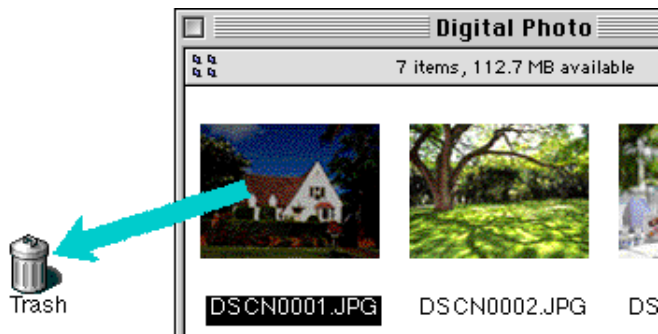
If there is enough space on the desktop, the entire image can be viewed at its current zoom ratio by clicking the zoom box at the top right corner of the image window. The image window will be either enlarged to show the entire image or, if the image is larger than the desktop, enlarged to fill the desktop.

## Deleting Images

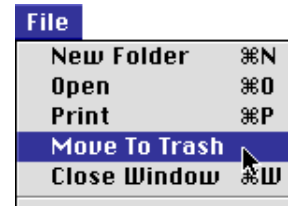
When browsing images on disk or on a compact flash-memory card, you can delete images by moving their associated thumbnails to the trash.

**Note:** *When images in the camera are dropped into the Trash, an alert dialog will appear. If you click **OK**, the image will be permanently deleted without being stored temporarily in the Trash. Image files can be permanently deleted in this way, so be sure to check the image being deleted before carrying out this step.*

Images can be moved to the Trash by dragging their associated thumbnails over the **Trash** icon and releasing the mouse button.



Images can also be moved to the Trash by selecting their thumbnails in the browser window and choosing **Move to Trash** from the **File** menu.



To permanently delete the images, select **Empty Trash** from the **Special** menu.

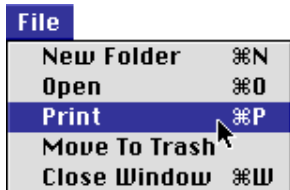
**Note:** *When you select **Move To Trash**, and you are sure that you want to delete the image in the camera, click **OK** in the alert dialog.*

## Printing Images

Images selected in the browser window can be printed by choosing the **Print** command from the **File** menu. Images displayed in the built-in viewer can also be printed from the image window as described below.

### Printing images from the browser window

To print images, select the associated thumbnails and choose **Print** from the **File** menu.



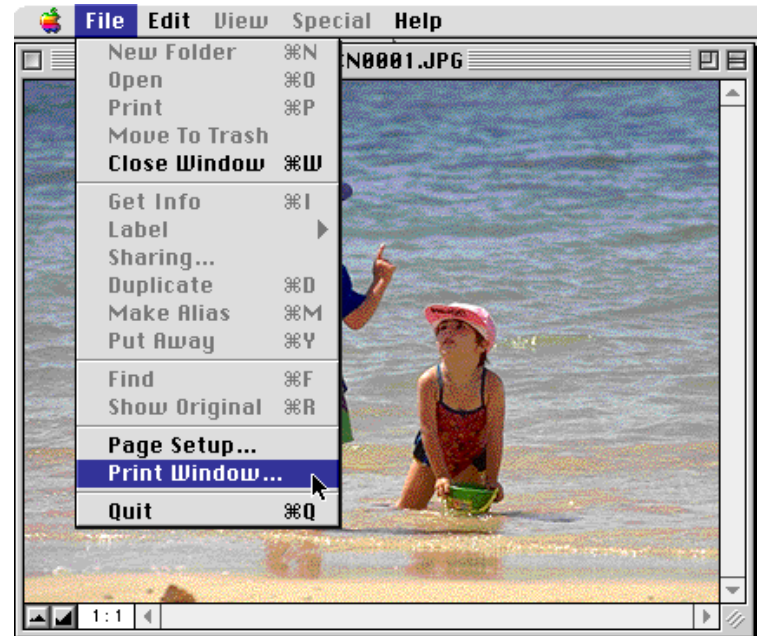
If you are opening images currently stored in or that have been copied from the camera's memory, the application specified in the Nikon View Control window will start and the Print dialog will be displayed. Make such changes to printer settings as you desire and print the images.

#### Tip

In order to open images in compact flash-memory cards, you will need to use Macintosh PC Exchange or a similar control panel to associate the DOS file suffix (extension) ".JPG" or ".TIF" with a suitable application. See "Opening Images in Another Application," below.

### Printing from the image window

Images displayed in image windows in the built-in viewer can be printed by selecting **Print Window...** from the **File** menu.



The print dialog box for the printer currently selected in the Chooser will be displayed. Print the image after adjusting printer settings. If multiple image windows are open, only the image in the currently active window will be printed.

## Changing the Appearance of Thumbnails

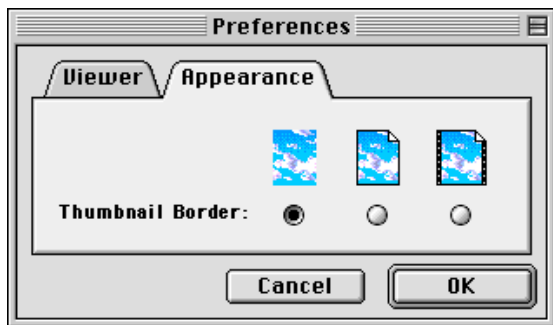
By default, thumbnail previews in the browser window are displayed in the “No border” style frame. You can choose to display images in a document-style frame or with no frame at all.

- 1 Select **Preferences...** from the **Edit** menu.



The Preferences dialog will be displayed.

- 2 Click the **Appearance** tab to open Appearance panel.



- 3 Choose a frame from the list of **Thumbnail Border** radio buttons.



(No border)

When this button is selected, thumbnails will be displayed without a frame.



(Document border)

When this button is selected, thumbnails will be displayed in a document-style frame, as shown at right.



(Film-strip border)

When this button is selected, thumbnails will be displayed in a film-strip frame.



- 4 After choosing the desired style, click **OK**.

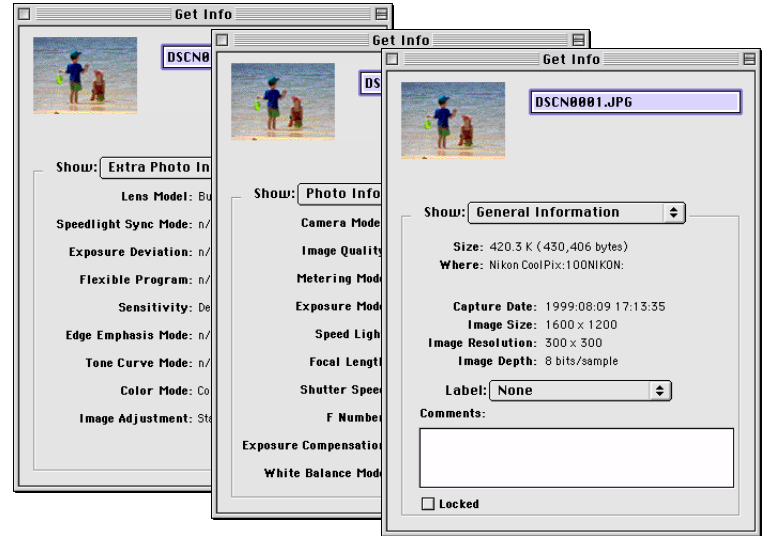
The thumbnails in the browser window will be displayed in the selected frame.

## Viewing Image Information

You can view information on selected images. After selecting the thumbnails, select **Get Info** from the **File** menu.



A window with information on the selected image appears. You can find general information, photo information and extra photo information in the Get Info window. You can switch between the three by using the **Show** pop-up menu.



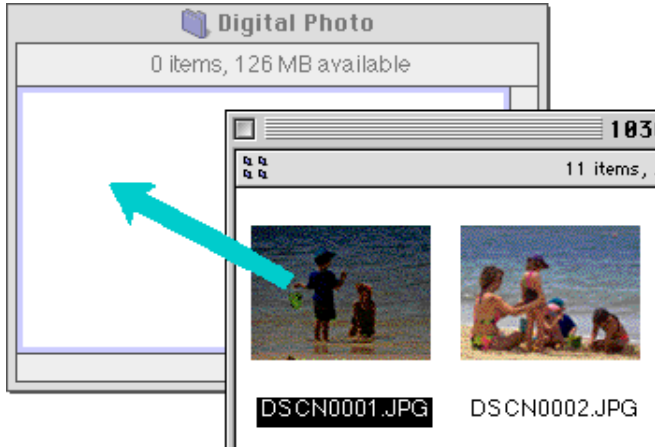
General information includes file size, file location, capture date, dimensions of the selected image and, if the camera ID was set by *Nikon Capture*, the camera ID of the camera used to take the photo. Further, you can add comments in the **Comments** box. Photo information contains information on camera settings such as camera model, image quality and metering mode at the time the photograph was taken. Extra photo information contains camera control settings information such as extra deviation, sensitivity and tone curves.

### Tip

You can rename images while browsing the PC card or the hard disk.

## Copying Images to Disk

Selected images in the browser window can be copied to disk by dragging any of the selected thumbnails over the destination folder and releasing the mouse button.



**Note:** Because the camera functions as a read-only drive, images can only be copied, not moved, even if the option key is not held down.

### Tip

All images taken with the camera are assigned file names of the form "DSC\_nnnn.xyz," where "nnnn" is a four-digit file number and "xyz" is a three-letter extension (JPG, TIF, or NEF). Similarly, all image files saved in folders in the camera's memory are assigned file names of the same type. To prevent images already copied to disk from being overwritten, change the filename after copying an image, or create a new folder for each folder on the camera.

## Opening Images in Another Application

When a thumbnail is double-clicked or a thumbnail is selected and **Open** chosen from the browser **File** menu, the image will be opened in the application specified for the purpose in the Nikon View Control window. Images can also be opened directly from any application that supports the file formats used by the camera.

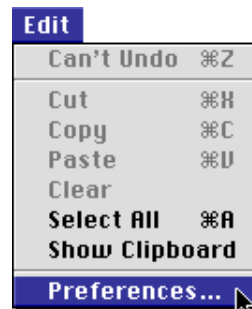
### Tip

When images are read directly from the camera, the creator program is set to the application specified in the Nikon View Control window. If the specified application is installed on your system, double-clicking images in the camera will open them in the application. When read directly from the camera's flash-memory cards, however, images are treated as DOS files with no creator. In order to open such images with a double click, you will need to use Macintosh PC Exchange or a similar control panel to associate the DOS file suffix (extension) ".JPG" or ".TIF" with suitable application. The same restriction applies to images copied directly from flash-memory cards.

## Opening selected images from the browser

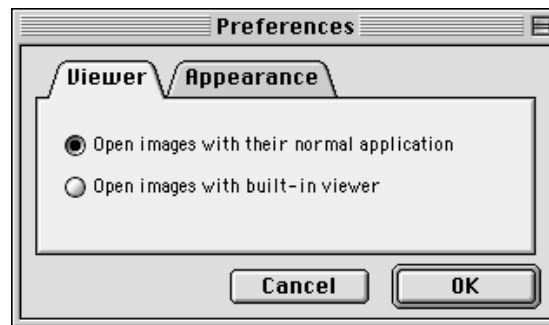
Follow these steps to open images with the specified application.

- 1 To choose settings so that images are opened using the designated application, choose **Preferences...** from the browser **Edit** menu.



The Preferences dialog will appear.

Click the **Viewer** tab to open Viewer panel. Select **Open images with their normal application** and click **OK**.





- 2 In the browser window, select the images you wish to open by clicking their thumbnails, then double-click any of the selected thumbnails or choose **Open** from the **File** menu.



The selected images will be opened in windows within the associated application.



### Tip

The application used to open camera image files is the one that you selected in the Nikon View Control window, when you mounted the camera. If you selected the default "Nikon View Browser," it will start, and you can view images at full resolution using the browser's built-in viewer. If you chose another application, that application will start, and open the images. If the specified application is not installed when you attempt to open an image, a dialog will appear prompting you to choose the application to be used. Choose a suitable application from the dialog box.



## Opening selected images by drag and drop

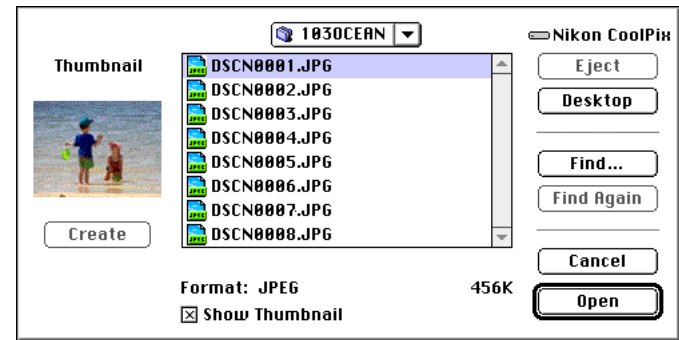
Selected images can be opened in any application that supports the file formats used by the camera by dragging their thumbnails over the application's icon or alias and releasing the mouse button.



The application will start and the selected images will be opened in windows within the application.

## Opening images from the application's Open dialog

Images in the camera can be opened from any application that supports the file formats used by the camera by choosing **Open...** or **Open File...** from the application's **File** menu. In the Open dialog, navigate to the Desktop, select the Nikon CoolPix drive, and click the **Open** button. The folders in the camera memory are displayed; choose the one you want and click the **Open** button. The images in selected folder will be listed. If the application's Open dialog supports preview display, a preview of the image currently selected will appear in the dialog box.



Select the image you wish to open and click the **Open** button to open the image in the application.

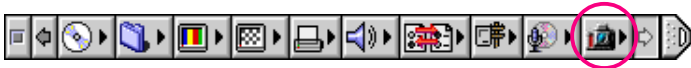
**Note:** *Previews is only displayed in the Open dialog box if the **Create Thumbnails** item in the Nikon View Control window was checked when the camera was mounted.*

# Nikon View Reference

This chapter provides a brief reference guide to *Nikon View*'s windows and menus. Refer to this guide when you want to know the meaning of a command.

## Nikon View Control Strip Item

When *Nikon View* is installed, a Nikon View item is added to the Macintosh control strip (note that as not all Macintosh computers support the control strip function, you may not be able to use this item on your computer). This item can be used for easy access to such operations as mounting and unmounting the camera.



### Tip

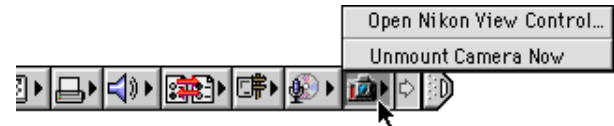
If the control strip is not visible on the desktop, it can be displayed by choosing **Control Strip** from the **Control Panels** submenu of the Apple menu and selecting the **Show Control Strip** radio button.

The functions of the Nikon View item are described below.

when the camera is not mounted:



when the camera is mounted:



### Open Nikon View Control

Opens the Nikon View Control window, which can be used to mount or unmount the camera and make changes to such options as connection port and port speed.

### Mount Camera Now

Mount the camera currently connected to the computer's modem/printer port.

### Unmount Camera

Remove a currently mounted camera from the desktop.

# The Browser Window

This is the Nikon View Browser window. The browser window shows image files in the camera's memory, compact flash-memory cards, or any other drive or folder as thumbnail previews. Images can be opened by double-clicking a thumbnail or copied to disk by drag-and-drop. Window operations are detailed in "*Nikon View Browser.*"

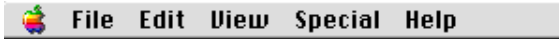


## Tip

You can select images using the **tab** key or the arrow keys.



## The Menu



The menus in the menu bar allow you to manage images in the camera's memory or in other folders. The commands available in each menu are outlined below. A more complete description of the tasks that may be performed using the menu commands may be found in the chapter, "*Nikon View Browser*."

### The Apple Menu

In addition to the usual Apple menu items, the Apple menu contains an **About Nikon View Browser...** option when the browser window is active.



### About Nikon View Browser...

Gives copyright information for *Nikon View Browser*. Click anywhere within the About dialog box to clear it from the screen.

## The File Menu

File	
New Folder	⌘N
Open	⌘O
Print	⌘P
Move To Trash	
Close Window	⌘W
Get Info	⌘I
Label	▶
Sharing...	
Duplicate	⌘D
Make Alias	⌘M
Put Away	⌘Y
Find	⌘F
Show Original	⌘R
Page Setup...	
Print Window...	
Quit	⌘Q

### New Folder (⌘N)

Creates a new folder. Note however that as the camera functions as a read-only disk, this command is not available in the Nikon CoolPix window.

### Open (⌘O)

Opens selected images in the built-in viewer or in the creating application, depending on what settings have been chosen in the Preferences dialog box.



## Print (⌘P)

Selected images will be opened in the creating application, and the application's Print dialog will be opened allowing you to make changes to printer settings and print the image.

## Move to Trash

Moves selected images to the Trash. If this command is used for images in camera memory, an alert dialog will be displayed.

## Close Window (⌘W)

Closes the browser window. Clicking the close box at the left end of the title bar has the same effect. Closing all browser windows ends your current session of *Nikon View Browser*.

## Get Info (⌘I)

Displays information on the selected image file.

## Label

Changes the label for the selected files.

## Sharing...

This command can not be selected from the browser window.

## Duplicate (⌘D)

Creates copies of the selected files or folders. Note however that as the camera functions as a read-only disk, this command is not available for images in camera memory.

## Make Alias (⌘M)

Creates an alias for the selected files or folders. Note however that as the camera functions as a read only-disk, this command is not available for images in camera memory.

## Put Away (⌘Y)

Returns files that have been placed on the desktop to the browser window. This command can be used when you have selected items on the desktop in the Finder. Note however that as the camera functions as a read only-disk, this command is not available for images in camera memory.

## Find (⌘F)

Displays Find File dialog box.

## Show Original (⌘R)

This command can not be selected from the browser window.

## Page Setup...

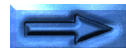
Brings up a dialog box which allows you change printer settings such as paper size and orientation.

## Print Window...

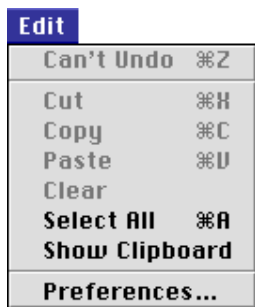
Prints the browser window.

## Quit (⌘Q)

Closes browser windows and ends your current session of *Nikon View Browser*.



## The Edit Menu



### Can't Undo (⌘Z)

### Cut (⌘X) / Copy (⌘C) / Paste (⌘V) / Clear

These commands are not available in the browser window.

### Select All (⌘A)

Selects all the images in the browser window for copying, printing, or deletion.

### Show Clipboard

Displays the contents of the clipboard.

### Preferences...

Opens the Preferences dialog box, where you can choose whether to open images in the built-in browser or in another application and set the appearance of the thumbnails in the browser window.

## The View Menu



### as Icons / as Buttons / as List

### as Window / as Pop-up Window / Clean Up

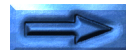
These commands cannot be accessed from the browser window.

### Arrange

Orders the thumbnails in the browser by name, date modified, date created, size, kind, or label.

### View Options...

Opens the View Options dialog for the browser window.



## The Special Menu



### Empty Trash...

Deletes all items in the Trash.

### Eject Disk

This command is not available in the browser window.

### Erase Disk...

This command is not available in the browser window.

### Sleep

Puts the system into sleep mode. Normal operation can be restored by pressing any key on the keyboard.

### Restart

Ends the current session of *Nikon View Browser* and any other open applications and restarts the system.

### Shut Down

Ends the current session of *Nikon View Browser* and any other open applications and turns off the computer.

## The Help Menu



### About Balloon Help...

Provides an explanation of the Finder's "Balloon Help" function.

### Show Balloons/Hide Balloons

Turns Balloon Help on or off.